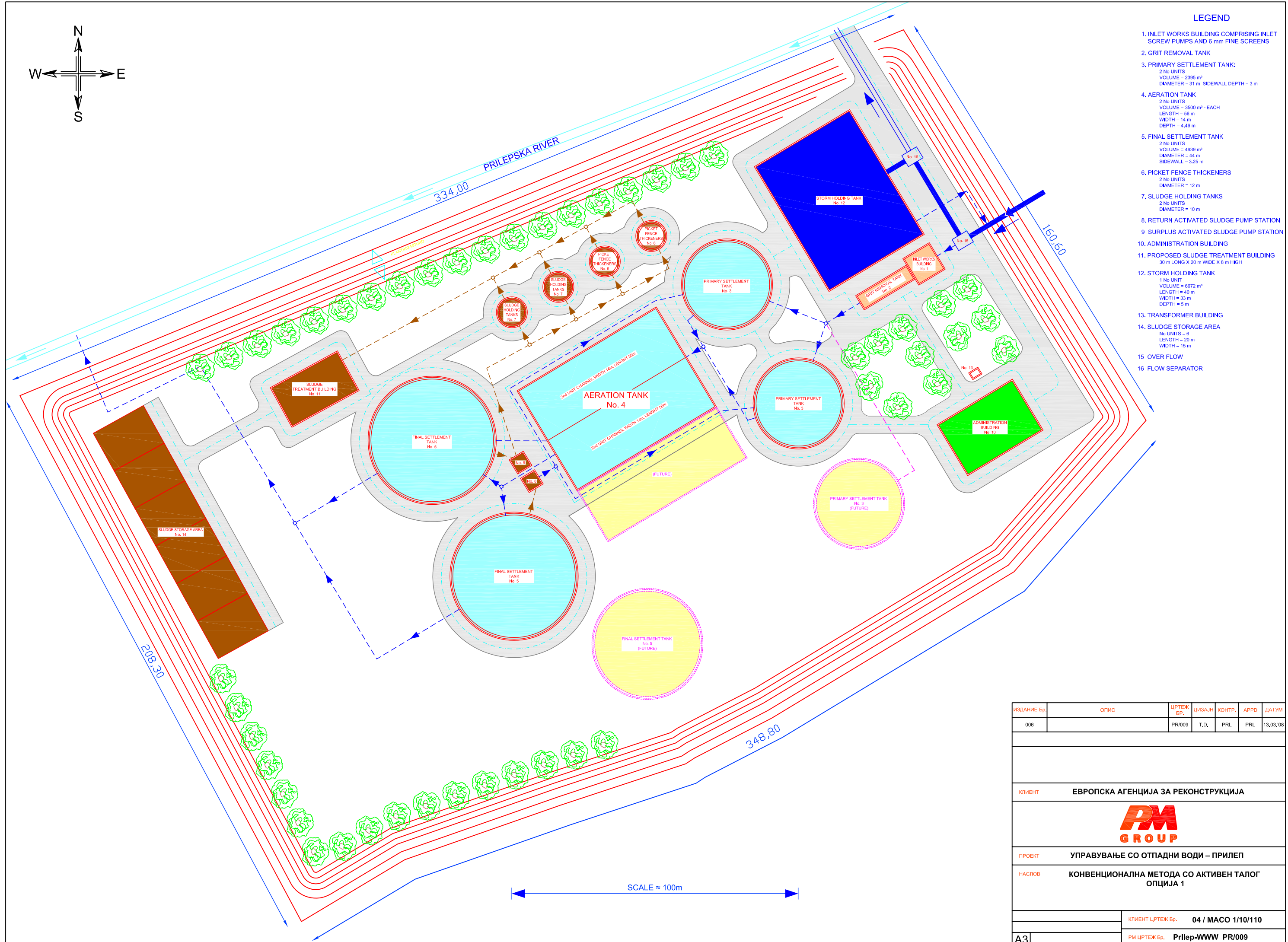


LEGEND

1. INLET WORKS BUILDING COMPRISING INLET SCREW PUMPS AND 6 mm FINE SCREENS
2. GRIT REMOVAL TANK
3. PRIMARY SETTLEMENT TANK:
2 No UNITS
VOLUME = 2395 m³
DIAMETER = 31 m SIDEWALL DEPTH = 3 m
4. AERATION TANK
2 No UNITS
VOLUME = 3500 m³ - EACH
LENGTH = 56 m
WIDTH = 14 m
DEPTH = 4,46 m
5. FINAL SETTLEMENT TANK
2 No UNITS
VOLUME = 4939 m³
DIAMETER = 44 m
SIDEWALL = 3,25 m
6. PICKET FENCE THICKENERS
2 No UNITS
DIAMETER = 12 m
7. SLUDGE HOLDING TANKS
2 No UNITS
DIAMETER = 10 m
8. RETURN ACTIVATED SLUDGE PUMP STATION
9. SURPLUS ACTIVATED SLUDGE PUMP STATION
10. ADMINISTRATION BUILDING
11. PROPOSED SLUDGE TREATMENT BUILDING
30 m LONG X 20 m WIDE X 6 m HIGH
12. STORM HOLDING TANK
1 No UNIT
VOLUME = 6672 m³
LENGTH = 40 m
WIDTH = 33 m
DEPTH = 5 m
13. TRANSFORMER BUILDING
14. SLUDGE STORAGE AREA
No UNITS = 6
LENGTH = 20 m
WIDTH = 15 m
15. OVER FLOW
16. FLOW SEPARATOR



ИЗДАНИЕ Бр.	ОПИС	ЦРТЕЖ Бр.	ДИЗАЈН	КОНТР.	APPD	ДАТУМ
006		PR/009	T.D.	PRL	PRL	13,03,08
КЛИЕНТ ЕВРОПСКА АГЕНЦИЈА ЗА РЕКОНСТРУКЦИЈА						
PM GROUP						
ПРОЕКТ УПРАВУВАЊЕ СО ОТПАДНИ ВОДИ – ПРИЛЕП						
НАСЛОВ КОНВЕНЦИОНАЛНА МЕТОДА СО АКТИВЕН ТАЛОГ ОПЦИЈА 1						
КЛИЕНТ ЦРТЕЖ Бр. 04 / MACO 1/10/110						
PM ЦРТЕЖ Бр. Prilep-WWW PR/009						

A3